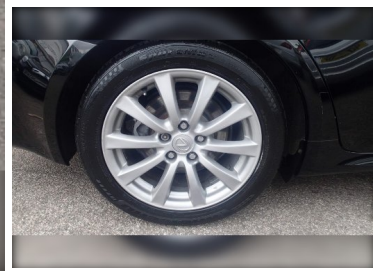


LeighServiceStation

2008(58) Lexus IS 250 SE-L 4dr Auto

£5,995



Engine: Petrol
Body: Saloon
Gearbox: Automatic
Capacity: 2499cc
Colour: Black
Mileage: 70,199
CO²: 214g/km
MPG: 31.0mpg
Top Speed: 141mph
BHP: 201bhp
Insurance Grp: 29E

Leigh Service Station Ltd
 1647-1653 London Road
 Leigh-On-Sea
 Essex, SS9 2SQ

SERVICE HISTORY	17" ALLOYS
AUTOMATIC TRANSMISSION	SATELLITE NAVIGATION
ALARM	CLIMATE CONTROL
CRUISE CONTROL	ADJUSTABLE STEERING COLUMN
ANTI-LOCK BRAKES	CENTRAL DOOR LOCKING
DEADLOCKS	ELECTRONIC BRAKE FORCE DISTRIBUTION
ELECTRONIC STABILITY PROGRAMME	FRONT FOG LIGHTS
IMMOBILISER	FRONT HEAD RESTRAINTS
ELECTRIC POWER STEERING	SEAT HEIGHT ADJUSTMENT
IN DASH MULTI-INFORMATION DISPLAY	FRONT/REAR PARKING DISTANCE CONTROL
VEHICLE STABILITY CONTROL (VSC)	PUSH BUTTON STARTER
AUXILIARY SOCKET FOR EXTERNAL MP3 PLAYER	TRIP COMPUTER
BODY COLOURED BUMPERS	13 SPEAKERS
ELECTROCHROMATIC REAR VIEW MIRROR	6 CD/MP3 CHANGER
FRONT AND REAR ELECTRIC WINDOWS	AUTOMATIC RAIN SENSING WIPERS
	ELECTRIC/HEATED/FOLDING DOOR MIRRORS
	ELECTROCHROMIC DOOR MIRRORS
	FRONT WINDSCREEN DE-ICER
	GREEN TINTED GLASS

Call:01702 474206 | www.leighservicestationcarsales.co.uk